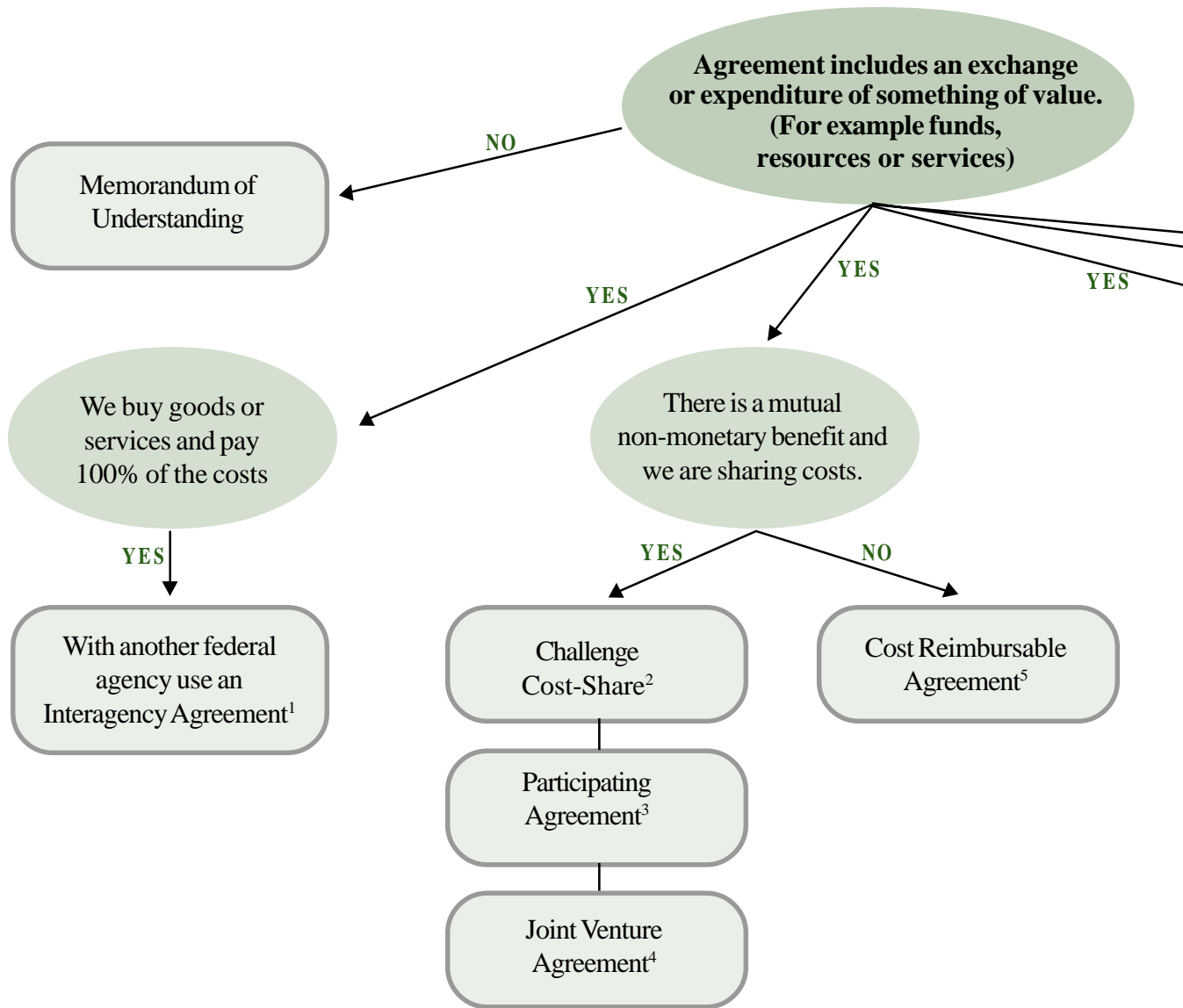


Decision Tree to Determine the Appropriate Instrument for a Partnership

The decision tree below provides basic guidance for choosing partnership instruments. Appendix B – Glossary of Terms – defines terms used in this chart.

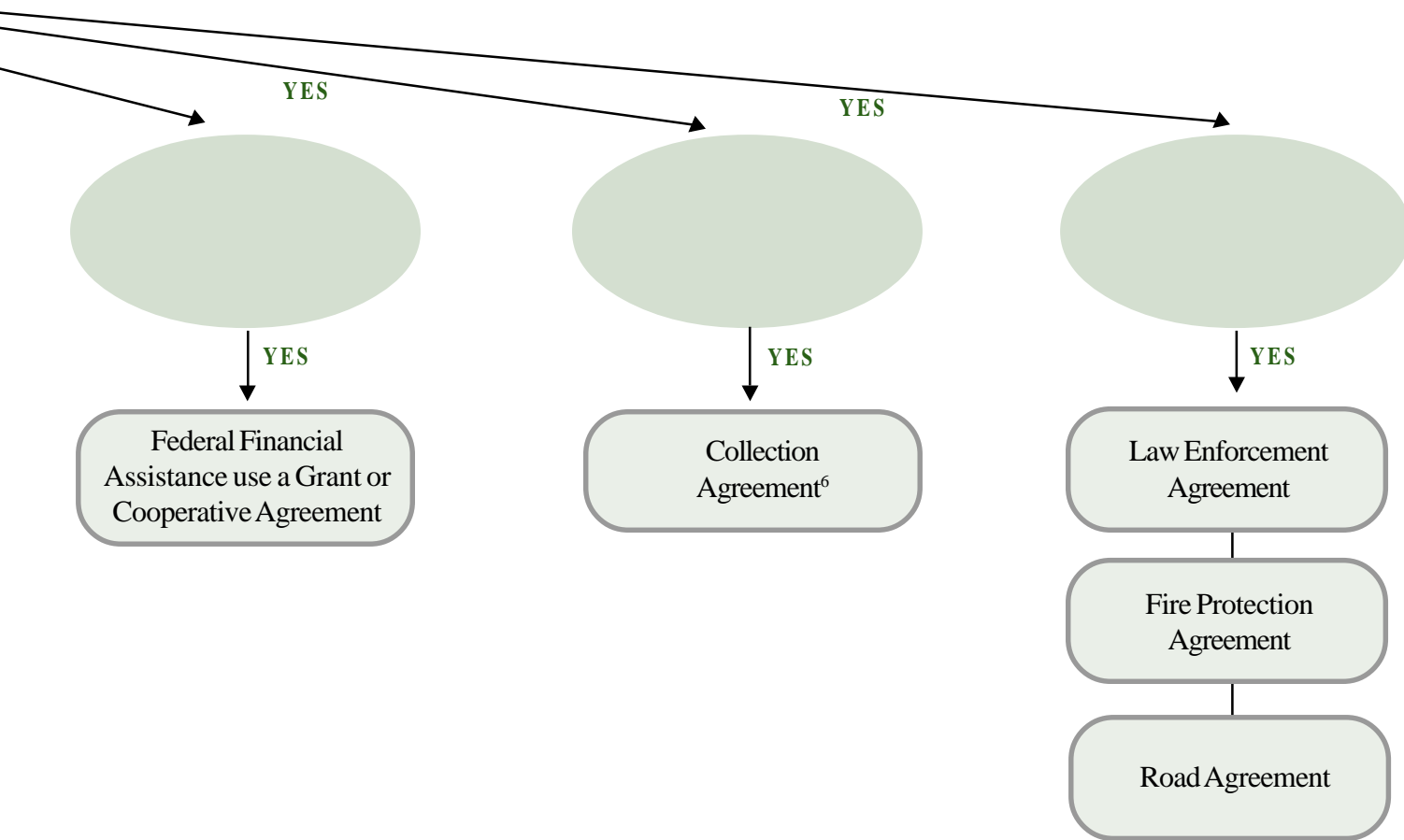


Notes

1: Agreement can include funds to another agency or another agency providing funds to the Forest Service. Use procurement with any other entity besides federal agency.

2: No set percentage of cost-share; activity must be part of Forest Service mission.

3: Specifically for pollution abatement, manpower/ job training, publication of forest history materials, or forest protection. No specified cost-share.



Notes

4: Cooperator must contribute at least 20% of total cost, activities must include agriculture teaching activities at institution of higher education.

5: Forest Service buying goods/services from a State Cooperative Institution of higher education. Services or goods available in-house for agriculture teaching activities.

6: There must be no conflict of interest; a signed agreement and apportionment authority is needed prior to starting work.